



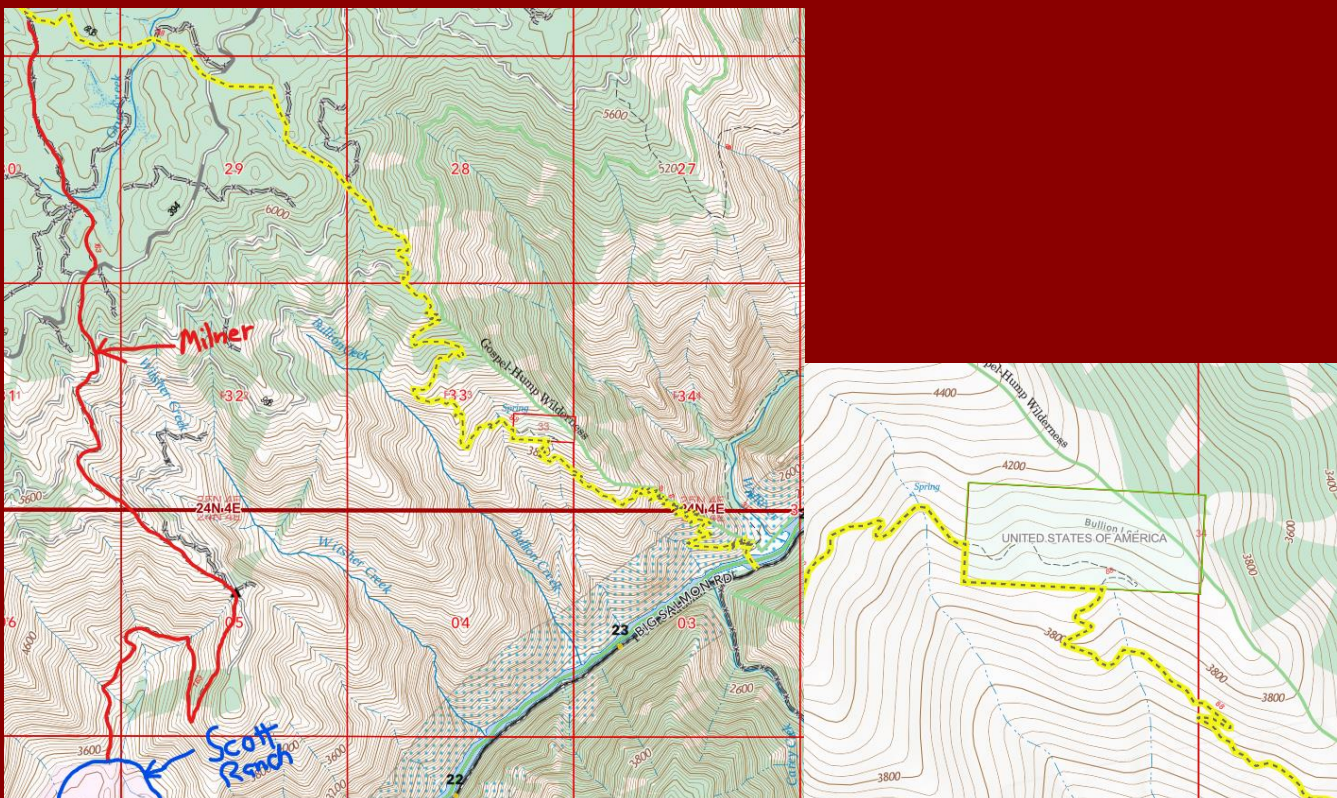
Idaho Pathfinders December Newsletter

We held our club meeting on December 6th at the Trails Restaurant.

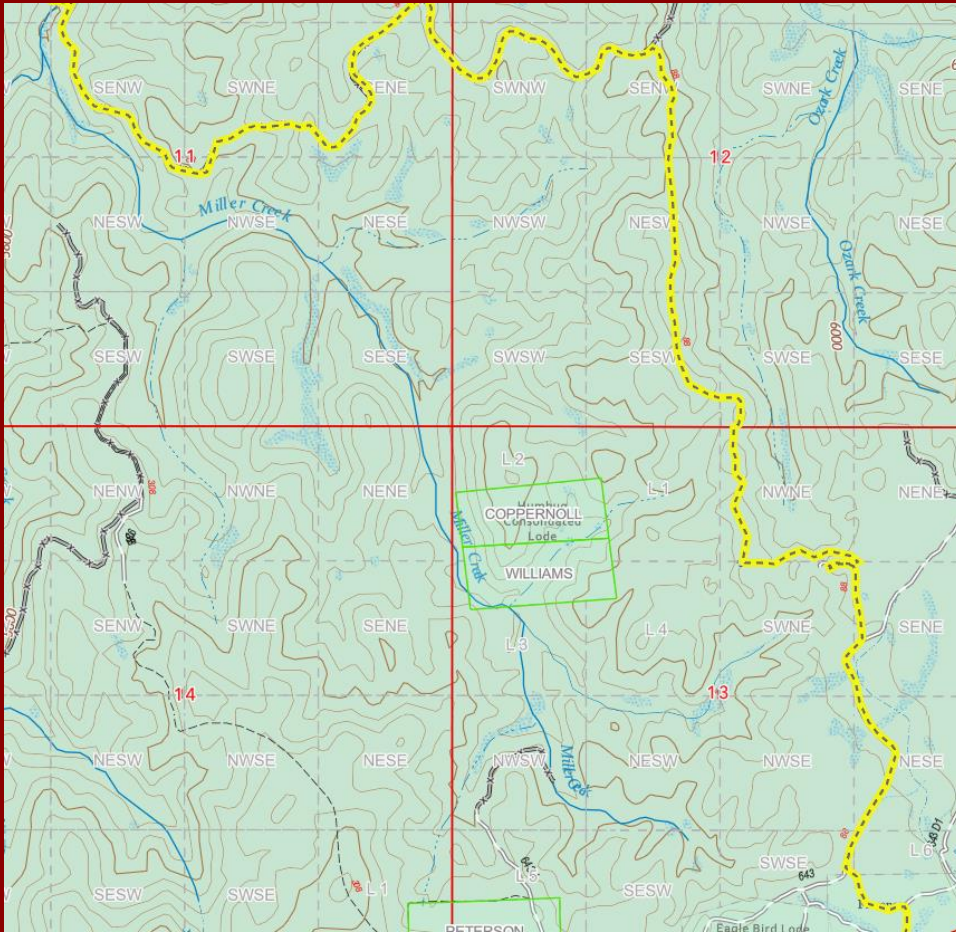
We covered our Treasurer report and bills to be paid and was approved.

We had a good turnout at this meeting with 20 members present.

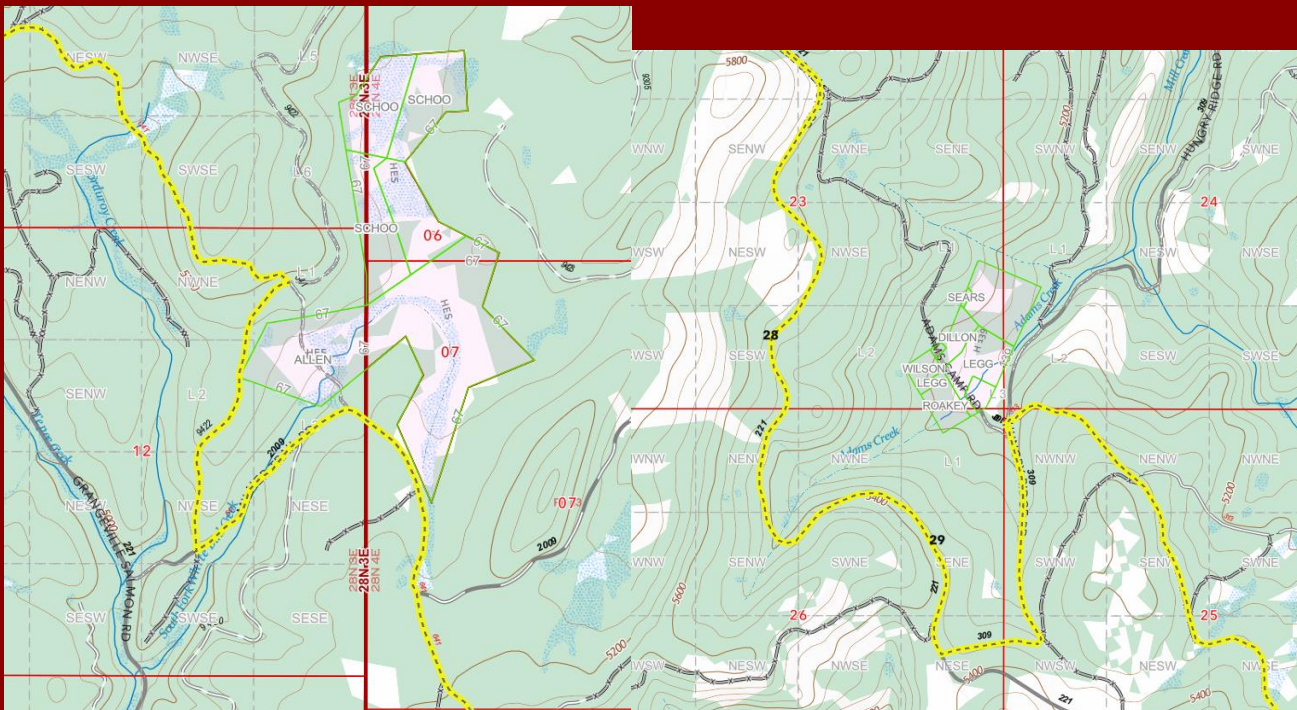
Milner Trail update: There is still no official finding of facts from the county attorney, but we have been told that the commissioners are working with the Forest Service to try and come up with some sort of agreement, which we have seen a proposed redirect of the Milner from the mapping department. Their current route has now taken the Scott Ranch completely out of the path and they have changed the route to go down the Bullion Mine. Which of course we know that after the Bullion it is motorbike only. Not only that but it looks like they want to go around the outside boundary of the Bullion which completely disconnects the trail and would make it un-passable.



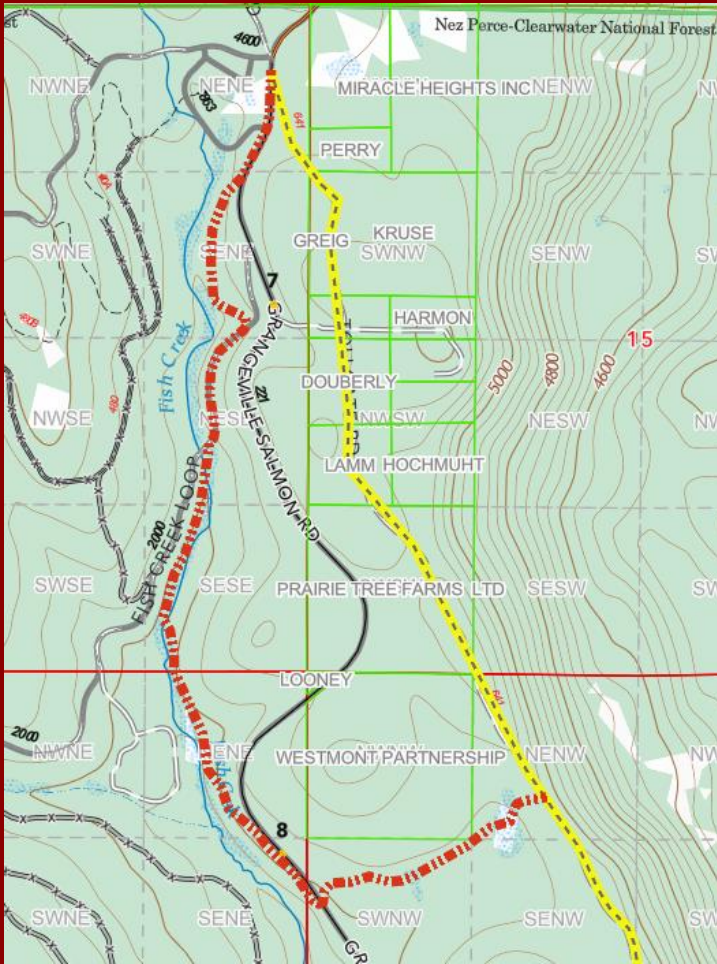
On another part of the trail it looks like they would make the redirect around the portion of the Milner that was blown out a couple years ago by the Forest Service.



Here is the Bypass for the current Vacations around Adams Camp and Whitebird Station that we having been working against this last year.

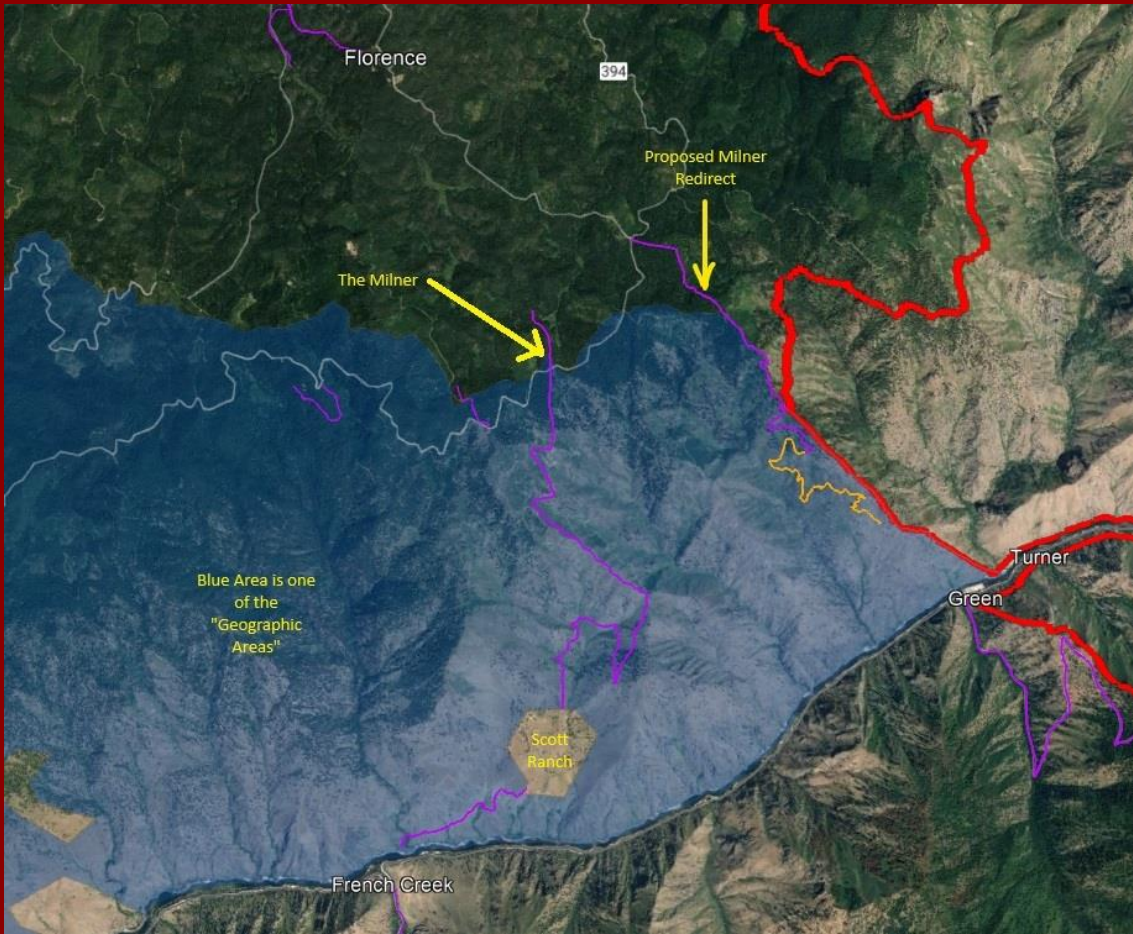


And finally, the newest thing we have seen on this map is up at Fish Creek Campgrounds. A proposed bypass around the private landowners.

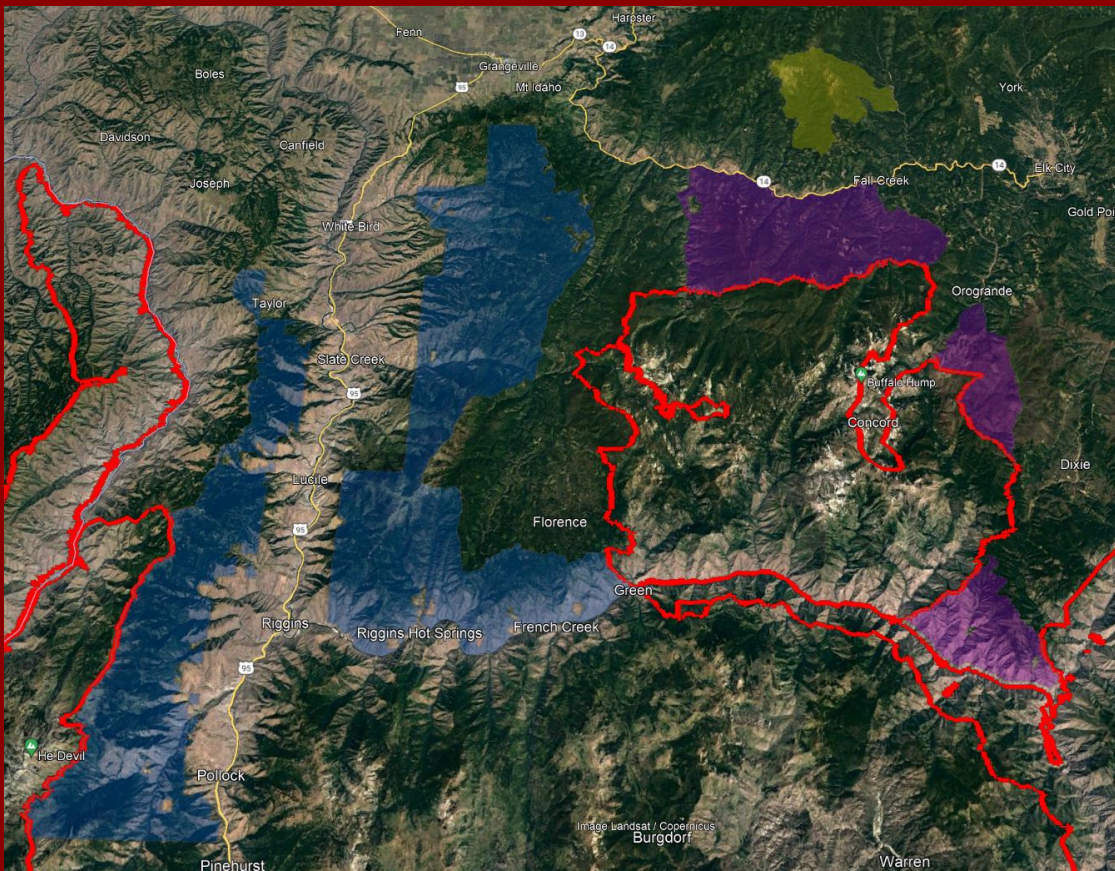


But, we are not done there! There is now a proposed Vacation of the section of the Milner from Mt. Idaho to Fish Creek on the County Commissioners schedule for January 9th. This section is currently not shown on the County GIS Map.

Now onto more news. I have sent a previous email out to everyone, with links, about the latest on the Nez Perce-Clearwater NFs Forest Plan Revision for USDA Forest Service. Please look into this and do some research and see what you think. As of this meeting, it was agreed that we need to fill out the electronic objection web form. As of my current research, I cannot find any information dealing with some of the listed "Geographic Areas" and we are hoping to get a representative of the Forest Service to join us at our next meeting to discuss this with us. One of the areas is in and around the Scott Ranch. There is a lot to look over including Management Areas, Recommended Wilderness, and Suitable Wild and Scenic Rivers.



All the Geographic Areas. Blue, Purple, and Yellow



The dinner tickets are selling fast, and we may not have any more by the end of the year. If you want to attend the event, please contact one of the Officer's and we will get you taken care of. We would like to thank everyone on the committee who has been working hard to make this event happen!

We are still brainstorming about what trails the club would like to ride next year. So far we have: McCommas Trails, Boise Stage, Scott Ranch, Indian Hill Look Out, Coolwater, Fog Mountain, Pittsburgh Landing BBQ with a ride up Big Canyon, Florence-Nut Basin-Chair Point, and Smokey Boulder-Black Lake. If you have any suggestions on trails you would like to see please come to a meeting or let one of the Officers know and we can add it to the list.

Merry Christmas and Happy New Year!!!



Our next meeting will be January 3rd at 6pm at The Trails Restaurant.